

# Penetration Testing Datasheet

## Penetration Testing as a Service (PTaaS)

**Edgescan Advanced™** in addition to continuous vulnerability management, Edgescan Advanced provides Penetration Testing as a Service (PTaaS).

**The depth and rigor of traditional pen testing delivered via the edgescan portal.**

As you fix, **Retests on demand** are not limited in any way to assist with remediation and verification that a vulnerability is closed.

Edgescan Advanced™ is delivered by an **OSCP** and **CREST** Certified expert team.

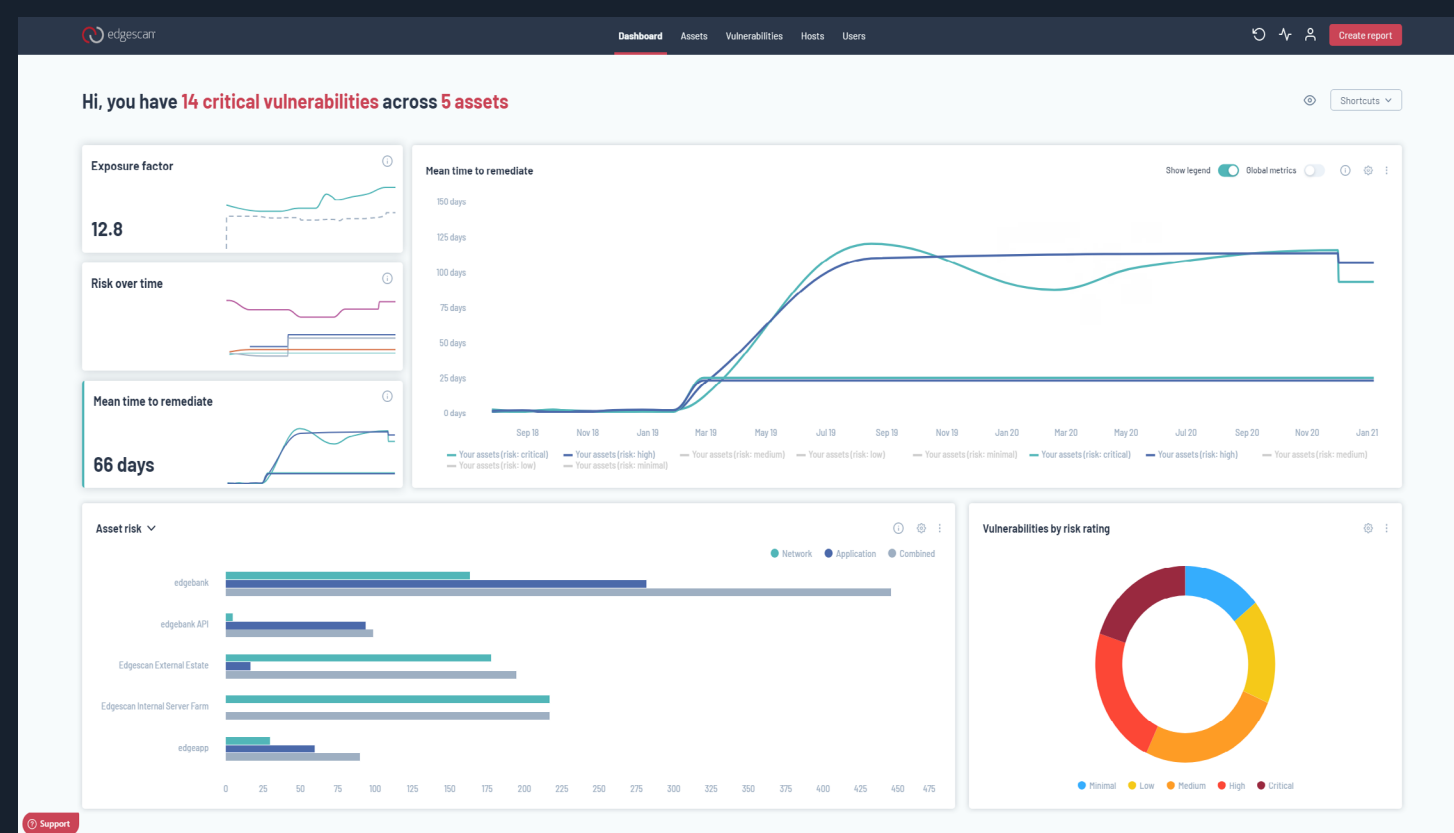
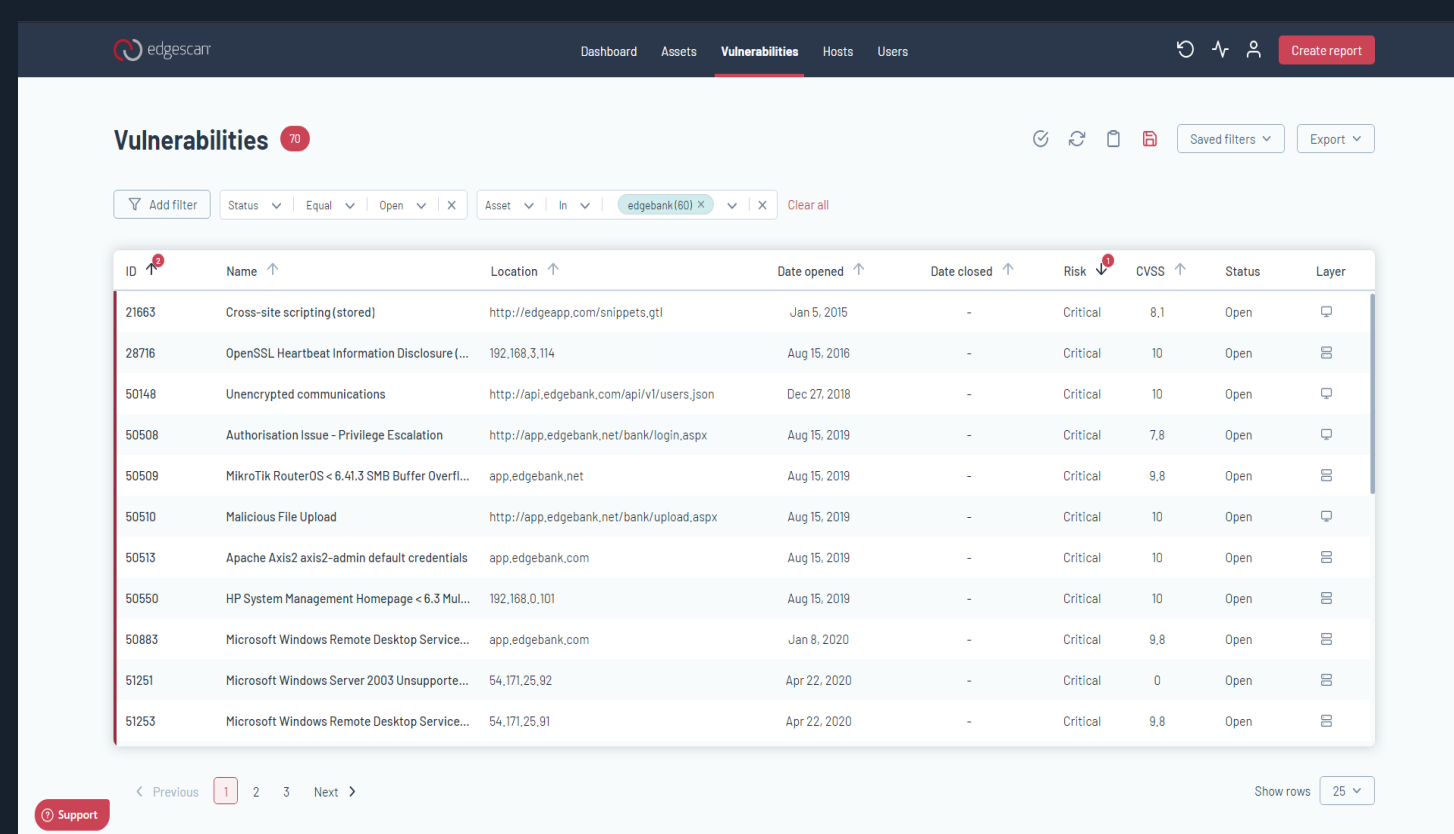
All vulnerabilities discovered with an Edgescan Advanced™ license are expertly verified and are guaranteed for accuracy.

Via the Edgescan portal users can request retests, track vulnerabilities and get support on-demand as required.

## Save Budget, Increase Coverage

An edgescan Advanced license consists of:

- A scheduled Penetration test – whenever you want
- Retesting of discovered issues – unlimited
- 12 month vulnerability assessment on-demand and unlimited
- Support and advice from our penetration testing team
- Additional Penetration Tests as required

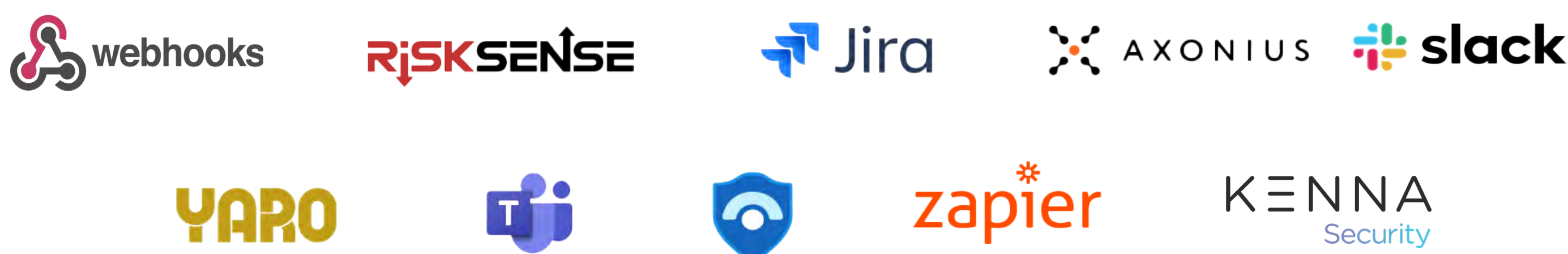
ID	Name	Location	Date opened	Date closed	Risk	CVSS	Status	Layer
21863	Cross-site scripting (stored)	http://edgescan.com/snippets.gtl	Jan 5, 2016	-	Critical	8.1	Open	
28716	OpenSSL Heartbeat Information Disclosure	192.168.3.114	Aug 15, 2016	-	Critical	10	Open	
50148	Unencrypted communications	http://api.edgescan.com/api/v1/users.json	Dec 27, 2018	-	Critical	10	Open	
50508	Authorisation issue - Privilege Escalation	http://app.edgescan.net/bank/login.aspx	Aug 15, 2019	-	Critical	7.8	Open	
50509	Mikrotik RouterOS < 6.41.3 SMB Buffer Overfl...	app.edgescan.net	Aug 15, 2019	-	Critical	9.8	Open	
50610	Malicious File Upload	http://app.edgescan.net/bank/upload.aspx	Aug 15, 2019	-	Critical	10	Open	
50513	Apache Axis2 axis2-admin default credentials	app.edgescan.com	Aug 15, 2019	-	Critical	10	Open	
50550	HP System Management Homepage < 6.3 Multi...	192.168.0.101	Aug 15, 2019	-	Critical	10	Open	
50883	Microsoft Windows Remote Desktop Service...	app.edgescan.com	Jan 8, 2020	-	Critical	9.8	Open	
51251	Microsoft Windows Server 2003 Unsupporte...	54.171.25.92	Apr 22, 2020	-	Critical	0	Open	
51253	Microsoft Windows Remote Desktop Service...	54.171.25.91	Apr 22, 2020	-	Critical	9.8	Open	

## Single Pane of Glass

Your penetration testing and vulnerability management combined in one **unified view**.

Automatically integrate your penetration testing and vulnerability management results with **bug tracking, Risk dashboards, Ticketing systems** etc.

<https://www.edgescan.com/edgescan-integrations/>



Features	Edgescan Advanced	Traditional Penetration Testing
Business Logic & Technical Vulnerability Testing	✓	✓
Detailed Exploitation Evidence	✓	✓
Vulnerability and Risk Validation	✓	✓
Vulnerability Management for 12 months	✓	
12 months support	✓	
Single "Pane of glass"	✓	
Retesting on-demand	✓	
Integration with ticketing, bug trackers, WAF, SIEM, CI/CD	✓	
Events and Alerting (Web hooks, Email, SMS, IM etc)	✓	
Reporting & Metrics on demand	✓	

Gartner

SCAwards  
2020 EUROPE  
WINNER  
Best Vulnerability  
Management Solution

aws partner  
network

PCI Security  
Standards Council  
APPROVED SCANNING  
VENDOR

Contributor  
Verizon 2019  
Data Breach  
Investigations Report

ISO  
27001  
CERTIFICATION  
EUROPE™

2019  
Tech  
EXCELLENCE  
AWARDS  
Managed Security Service  
Provider of the Year  
Edgescan

CREST

2019  
Computing  
Security  
Awards  
WINNER  
Pen Testing Solution of the Year

The Irish  
Advantage

 edgescan™  
FULLSTACK VULNERABILITY MANAGEMENT

IRL: +353 (0) 1 6815330  
UK: +44 (0) 203 769 0963  
US: +1 646 630 8832

Sales and general enquiries:  
[sales@edgescan.com](mailto:sales@edgescan.com)

View our latest

**2021 Vulnerability Statistics  
Report**

at [edgescan.com](https://www.edgescan.com)