



Global Partner Pack 2019

VULNERABILITY METRICS Datasheet



FULLSTACK VULNERABILITY MANAGEMENT™

© 2018. BCC Risk Advisory Ltd. | www.bccriskadvisory.com
www.edgescan.com

Sales and general enquiries:
sales@edgescan.com
 @edgescan

IRL: +353 (0) 1 6815330
 UK: +44 (0) 203 769 0963
 US: +1 646 630 8832

edgescan™ Vulnerability Metrics

The VULNERABILITY METRICS feature allows edgescan's users increase visibility of their organisation's overall security standpoint and compare their performance against the edgescan global average.



Currently, full reporting and API access for metrics is available, so that users can report on any asset or vulnerability at any time, open or closed. Also offered is the ability to report on assets which are tagged with user defined attributes.

The tagging feature allows users to tag assets in edgescan as per their requirements, with single or multiple tags.

The current metrics include:

- Risk over time
- Vulnerability count
- Asset Risk
- Recent activity
- Vulnerability opened
- Vulnerability closed
- Asset discovered
- New port/service discovered on exposed asset
- Note added to asset
- Host rediscovered

New Metrics tab displays the following:

Mean Remediation Time: The average time taken, in days, from a vulnerability being opened on an assets to the closing of that vulnerability

Average Patch Performance: The Mean Remediation Time for vulnerabilities with CVEs.

Remediation Performance Score: An overall rating of how quickly users act upon the vulnerability data provided by edgescan. This metric is based on the Mean Remediation Time and is weighted towards fixing the most critical vulnerabilities quickly.

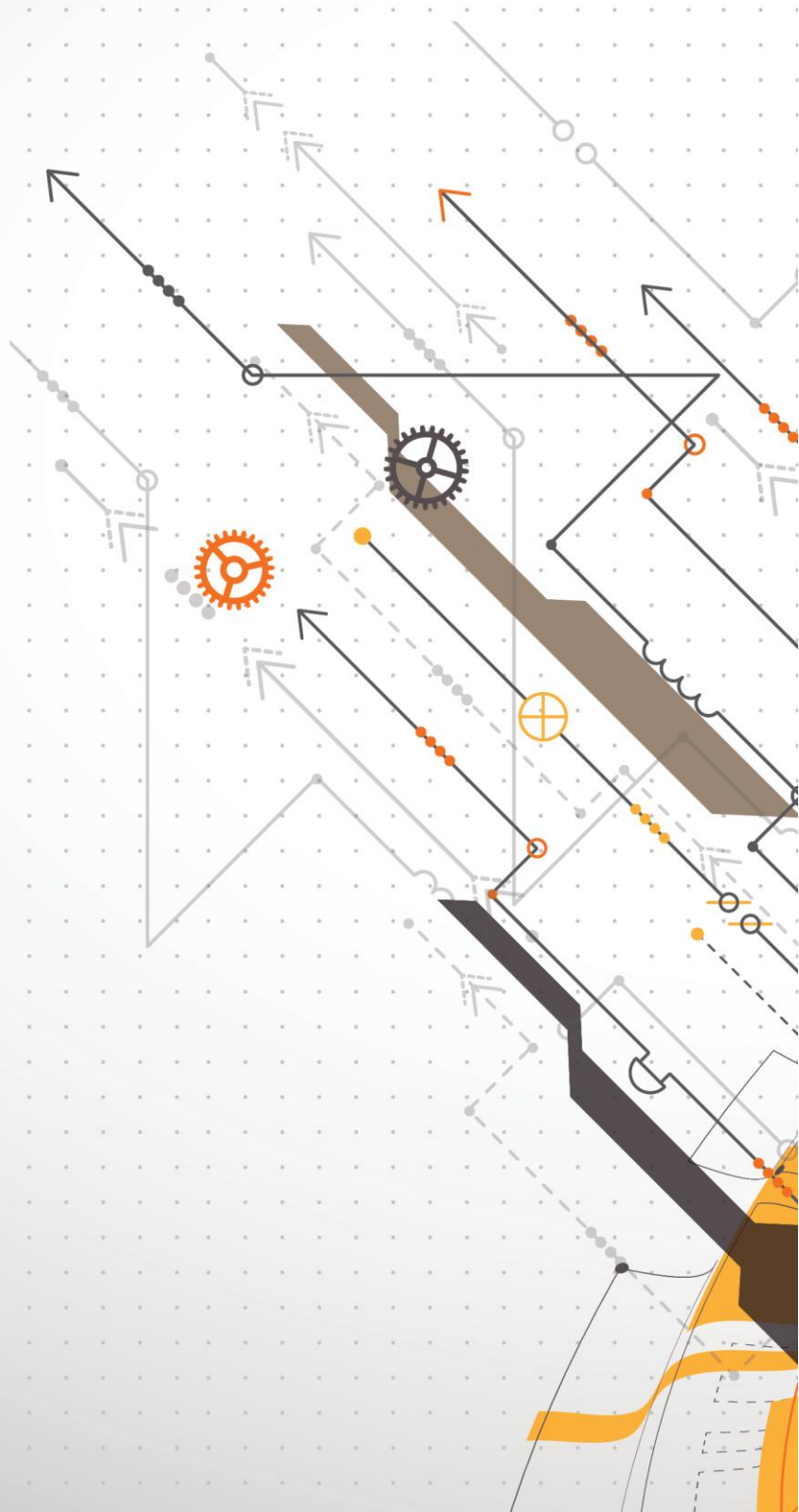
Vulnerable Asset Percentage: The percentage of users assets which have a vulnerability with a risk rating of high or critical.

Max Severity: The maximum severity value associated with the vulnerabilities on users assets.

CVSS Landscape: The percentage of users assets which have vulnerabilities with a CVSS score above 4 (Medium) and assets which have vulnerabilities with a CVSS score above 7 (High).

Average Assessment Count: The average number of security assessments which have been completed on users assets.

Other metrics are scheduled for release in Q2 of 2019, and those will further increase the control that organisations will have over their security operations.



FULLSTACK VULNERABILITY MANAGEMENT™

IRL: +353 (0) 1 6815330
UK: +44 (0) 203 769 0963
US: +1 646 630 8832

Sales and general enquiries:
sales@edgescan.com

[@edgescan](https://twitter.com/edgescan)

www.edgescan.com